

ᑭᐱᑭᑭᑭᑭᑭᑭ

ᑭᑭᑭᑭᑭᑭ

ᑭᑭᑭᑭᑭᑭ

HONOURING OUR  
ANCIENT ONES





# ʔahʔiiḥčap ʔukʷit ʔiqḥmuut



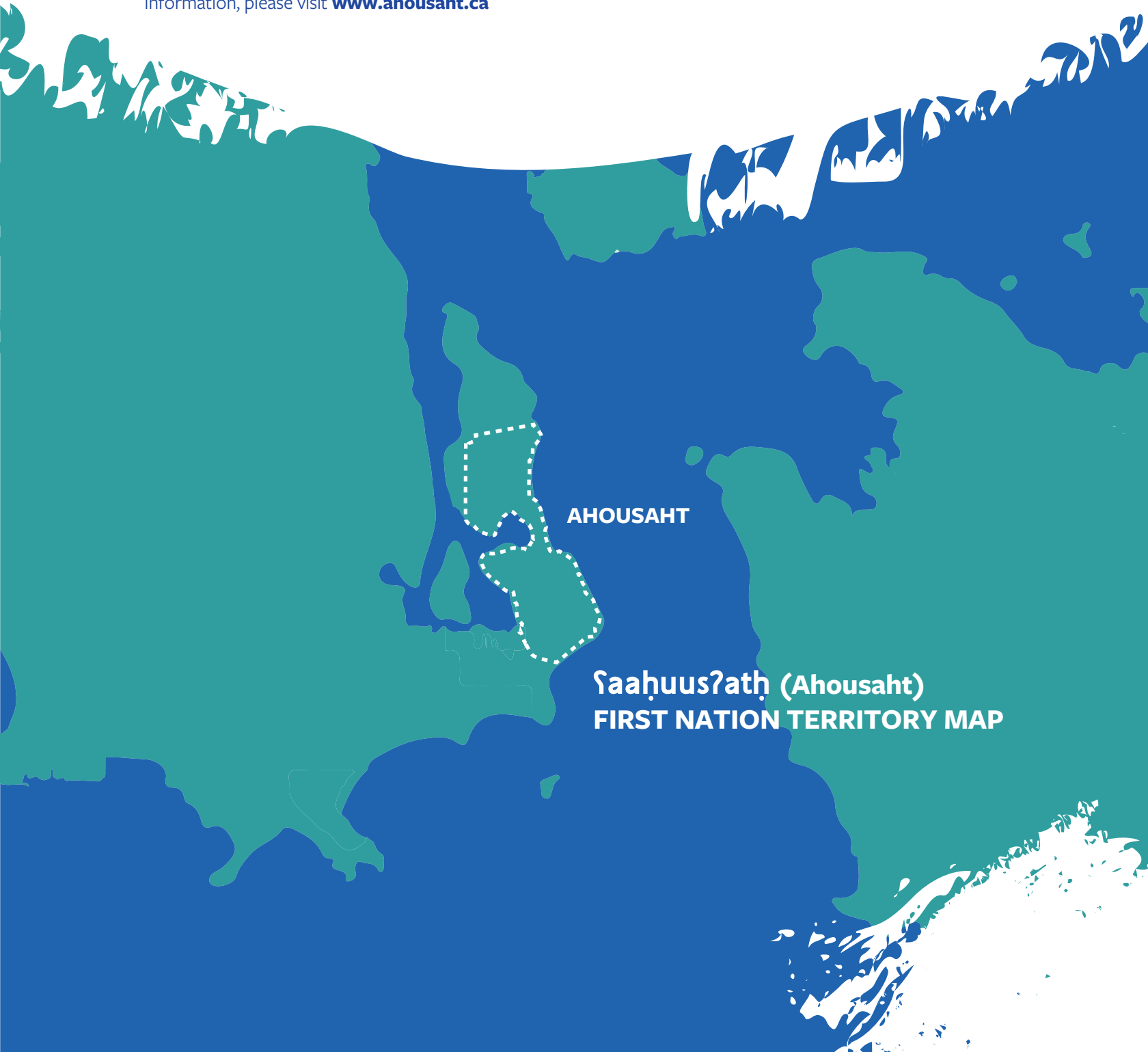
## HONOURING OUR ANCIENT ONES

Through archaeological and archival research, scanning technology and oral history, **ʔahʔiiḥčap ʔukʷit ʔiqḥmuut** is searching for children who attended residential schools located on their **ḥaahuuḥi** (territory): Ahousaht Indian Residential School, which was located near Maaqutusiis (home on Flores Island), and Christie Indian Residential School, which was located on Won a chus (Meares Island). The project has two mandates, first to look for and identify the children who attended these residential schools and to be a catalyst of healing, helping people feel comfortable to share their truth. The team vows to search for children who did not return home from these institutions.



## BOILERPLATE

**ʔaaḥuusʔath** (Ahousaht) is the largest of 14 Nuu-chah-nulth Nations on the west coast of Vancouver Island. There are over 2,100 registered members of Ahousaht who live all over Vancouver Island and across Canada, as well as in other countries. The village of Maaqtusiis is located on the southeastern tip of Flores Island, a half-hour boat ride north of Tofino. For more information, please visit [www.ahousaht.ca](http://www.ahousaht.ca)





## TRADITIONAL LANGUAGE

**ʔahʔiihčap ʔukʷił ʔiqhmuut** is the Nuu-chah-nulth word for “Honouring our Ancient Ones.” Language is essential to the expression of culture. It is important to the Ahousaht that all communications, including those written and told by media outlets, use the traditional project name, so we may honour our children and the resilience and strength they passed on to us.

**ḥ**

sounds like the “ha” when exhaling to clean your glasses

**ʔ**

The glottal stop is a speech sound produced by closing the vocal cords and then opening them quickly so that the air from the lungs is released with force.

**kʷ**

The rounded k adds the addition of lip rounding to the English “k” sound.

**č**

Called a grapheme, makes a sound like the “ch” in “chop”

**ł**

The barred “l” sound is made by placing your tongue behind your teeth and exhaling.

Below are a few popular font families and how it portrays these special characters:

- Roboto ʔahʔiihčap ʔukʷił ʔiqhmuut
- Arial ʔahʔiihčap ʔukʷił ʔiqhmuut
- Helvetica ʔahʔiihčap ʔukʷił ʔiqhmuut
- Verdana ʔahʔiihčap ʔukʷił ʔiqhmuut
- Calibri ʔahʔiihčap ʔukʷił ʔiqhmuut
- Avenir ʔahʔiihčap ʔukʷił ʔiqhmuut
- Courier New ʔahʔiihčap ʔukʷił ʔiqhmuut
- Time New Roman ʔahʔiihčap ʔukʷił ʔiqhmuut

Many popular font families support the special characters in the Nuu-chah-nulth alphabet. If the font family used by your media outlet does not support these special characters, please reach out to us for acceptable alternatives or consider using a supported font.

Nuu-chah-nulth is the traditional language of **Saahuusʔath**, which means “our backs against the mountains.” Learn more about the language at <https://www.ahousaht.ca/dictionary.html>



## AHOUSAHT CORE VALUES

**lisaakstalth** – respect one another

**Hahuupstalth** – teach one another

**Yaʔakstalth** – care for one another

**Huupiitstalth** – help one another

**Heshook-ish Tsawalk** – everything is one, everything is interconnected

## CULTURAL PROTOCOL WHEN ENGAGING FOR INTERVIEWS

Please respect the privacy of former students and their families by not approaching them for interviews unless one has been pre-arranged. When interviewing a former student, a wellness support worker must be present at all times. All interviews are to be done in the designated area, which will be shared at the time of the gathering.



### MEDIA CONTACT

**Anne Atleo**

Residential School Research Project Manager

ʔahʔiiḥčp ʔukʷitʔ ʔiqḥmuut (Honouring our Ancient Ones)

P: 250-266-2657

E: [residentialschool.researchproject@ahousaht.ca](mailto:residentialschool.researchproject@ahousaht.ca)

## LOGO & PROJECT LOGO LOCKUP

Icons Only



Icons & Text

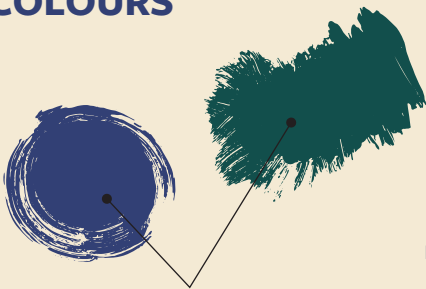


ʔaahuusʔath  
(Ahousaht First Nations)



ʔahʔiihčap ʔukʔit ʔiqhmuut  
(Honouring our Ancient Ones)

## COLOURS



The blue and green in the logo and primary colour scheme represent resilience, truth and resolution as a catalyst for healing.

The cedar brown colour represent the cedar tree, the tree of life.

